

Antech Reporting

The screenshot displays the Antech Reporting software interface with several overlapping windows:

- Antech Reporting (Lite)**: Shows tabs for Groups, Reports, Layouts, and Settings. Buttons for "Create New Group" and "Datamart" are visible.
- Antech Reporting (Admin)**: Shows tabs for Users, Groups, Reports, Layouts, and Settings. Buttons for "Create New User", "admin", and "john" are visible.
- Edit Report**: A window for configuring reports.
 - Report Details**: Report Name: Invoices, Report Group: Northwind.
 - Connection Details**: Connection Type: Sql Connection, Command Type: SQL Statement, Connection String: server=(local)\NETSDK; Tru...
 - Command Text (Select Statement)**:


```
SELECT Salesperson, Cust
(Discount) AS Discount, SUM
FROM Invoices
```
- User Access**: A window for configuring user access for user "john".
 - Tree view showing folders: GrocerToGo, Northwind.
 - Items under Northwind:
 - AROUT CustOrders (checked)
 - Invoices (checked)
 - OrderDetails (checked)
 - Orders Qty (checked)
- Data Table**: A table showing report data with columns: ProductID, date:est, UnitPrice, OrderID, Discount, Quantity, and UnitPrice Total.

ProductID	date:est	UnitPrice	OrderID	Discount	Quantity	UnitPrice Total
1C248	U	3.80	5	0	5	34.80
			10	0	10	3.80
			12	0	12	14.00
1C249	0	4.00	9	0	9	13.60
			40	0	40	42.40
1C250	0	7.70	10	0	10	7.70
			15	0.15	15	15.80
			35	0	35	42.40

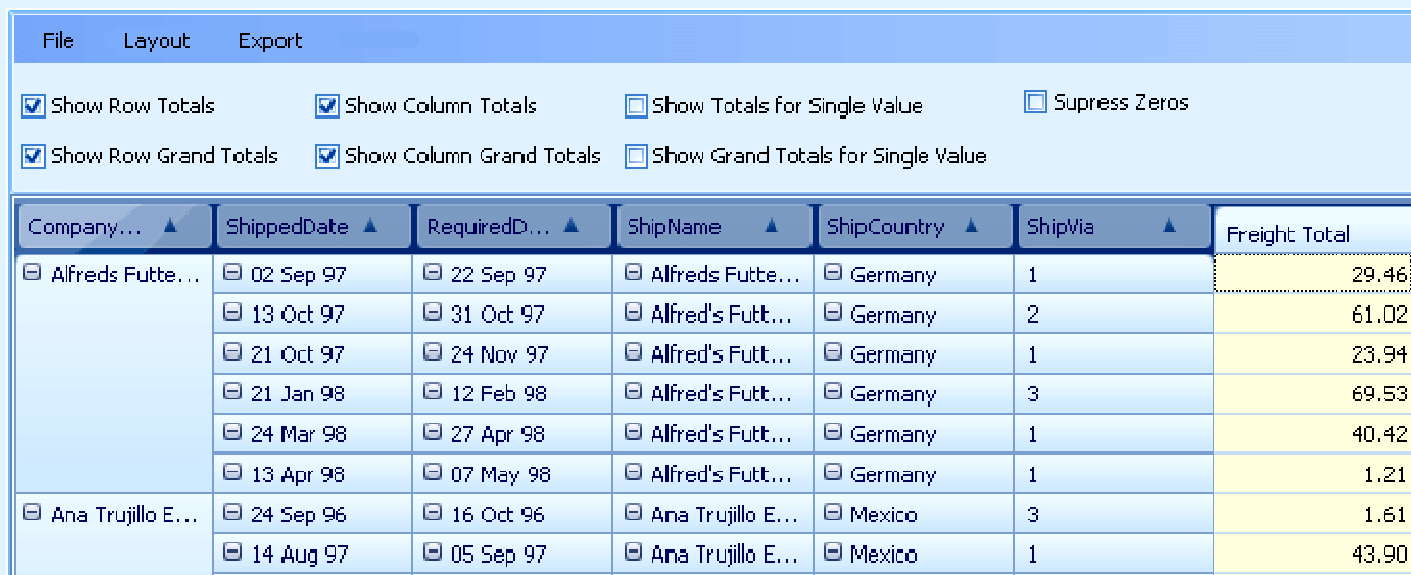
Antech Reporting is the thing you need if:

- ◆ Your organization handles great deal of data with different levels of visibility and reporting necessary depending on the situation
- ◆ Your organization has several locations and each one has its own typical reporting needs, which may be diverse and completely different from others.
- ◆ Your employees are poring over tons of data and you actually want them to simply put in and get requisite data which should take them just a fraction of the time.
- ◆ Your data entry and reporting is getting out of hand with no easy solution in sight.
- ◆ Deal with various financial data (For Financial and Banking Institutions)
- ◆ Spread over three tools, this kit caters to the entire variety of situations differently.

Built on Pivot Concept

The state of the art “Antech Reporting” comes in its three Avatars: Admin; Client and Lite. Each module suits particular needs, whether a system administrator; an advanced user or merely an end user.

Pivoting is a concept in which one can swivel a given spreadsheet in terms of rows to columns and vice-versa. Pivoting gives the user the power to present data in the manner desired without having to entirely redo the data selection and display of the rows and columns. Additionally these tools allow for automatic sorting, counting and summation.



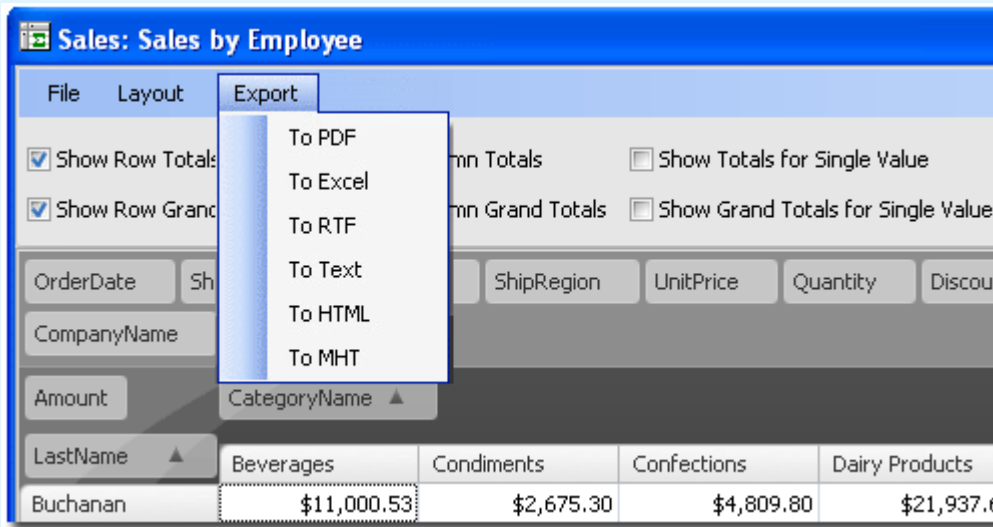
The screenshot displays the Antech Reporting software interface. At the top, there is a menu bar with 'File', 'Layout', and 'Export'. Below the menu bar, there are several checkboxes for report options: 'Show Row Totals' (checked), 'Show Column Totals' (checked), 'Show Totals for Single Value' (unchecked), 'Supress Zeros' (unchecked), 'Show Row Grand Totals' (checked), 'Show Column Grand Totals' (checked), and 'Show Grand Totals for Single Value' (unchecked). The main area contains a pivot table with the following data:

Company...	ShippedDate	RequiredD...	ShipName	ShipCountry	ShipVia	Freight Total
Alfreds Futte...	02 Sep 97	22 Sep 97	Alfreds Futte...	Germany	1	29.46
	13 Oct 97	31 Oct 97	Alfred's Futte...	Germany	2	61.02
	21 Oct 97	24 Nov 97	Alfred's Futte...	Germany	1	23.94
	21 Jan 98	12 Feb 98	Alfred's Futte...	Germany	3	69.53
	24 Mar 98	27 Apr 98	Alfred's Futte...	Germany	1	40.42
	13 Apr 98	07 May 98	Alfred's Futte...	Germany	1	1.21
Ana Trujillo E...	24 Sep 96	16 Oct 96	Ana Trujillo E...	Mexico	3	1.61
	14 Aug 97	05 Sep 97	Ana Trujillo E...	Mexico	1	43.90

The most important feature is that Pivot tables enable the Drag and Drop functionality, which users find extremely useful to manipulate data on the fly. You may want to refer a Wikipedia article on Pivot Tables which demonstrates the basic features.

Reports and Layouts

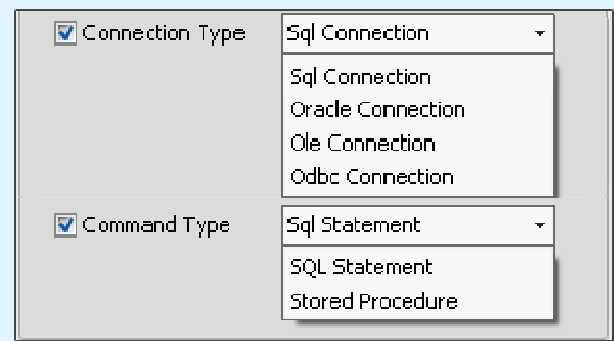
Single Report can be expanded to n number of Layouts. Using the sample Layouts and reports, most of the universal tasks can be accomplished in a flash, and the more complex tasks can be tackled by the software with greater ease than any database query could do before.” .It’s a complete data driven Application.



- ◆ Exports Pivot Tables to PDF, HTML, Excel, RTF, MHT and Text
- ◆ Print and Preview Pivot Tables
- ◆ Option to Show/Hide Row and Column Totals

Development and Supported Platforms

This program supports native connection to SQL and ORACLE, DB2, MySQL or any other database that can be connected thru ODBC. Lite Edition doesn't need any database to be installed, however, the multi-user versions needs SQLEXPRESS (Royalty Free Usage), SQL 2000/2005 database to maintain the Users.



This program is a 100% .Net Framework 2.0 managed code. It is also an Object Oriented Design making the program designed for performance with minimal penalty on the OS or the hardware.. Issues like Customizing and Expandability have been given due diligence and incorporated with great care to ensure both are well in place within the backbone of the program. Simple and Intuitive Screen Designs make using the program simple and the learning is absolutely easy with the gentle learning curve

Antech Reporting Admin Module

This module is meant for the power users at the administrator level.

Key features include:

- ◆ Ability to create database access scripts, methods and define the server and its connections settings
- ◆ Ability to make groups for users, and their report generating Layouts and definitions
- ◆ Edit / Delete existing users; groups and reports

Connection Details

Connection Type:

Command Type:

Connection String: server=(local)\NETSDK; Trusted_connection=true; database=Northwind

Test Connection Settings

Command Text (Select Statement / Stored Procedure)

```
SELECT Salesperson, CustomerName AS Customer, OrderID, 1 AS Orders
(Discount) AS Discount, SUM(ExtendedPrice) AS Total
FROM Invoices
```

Default Settings

Startup Tab:

Startup Group:

Startup Report:

Theme:

Connection Type:

Command Type:

Update Selected Settings

- ◆ Admin users can interact and define the related Database
- ◆ Provision to create and designate users and their privileges
- ◆ Modify program settings and features including the user interface defaults, looks and variations

Antech Reporting Client Module

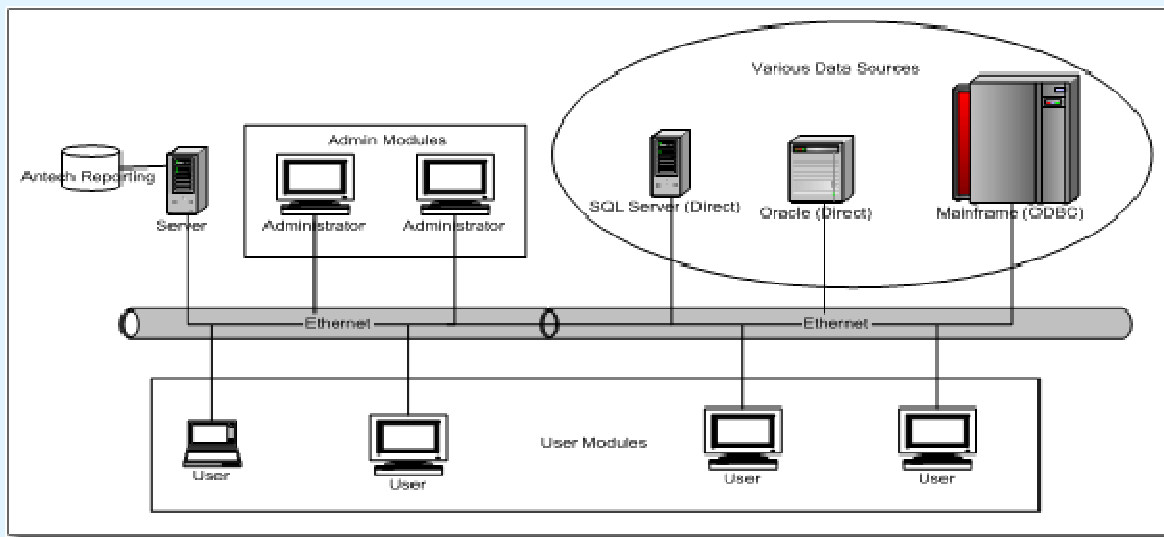
- ◆ Users can define groups and reports
- ◆ Users can edit and manage Layout reports
- ◆ Users can interact with the related Database

OrderID	Discount	Quantity	UnitPrice Total
10248	0	5	34.80
		10	9.80
		12	14.00
10249	0	9	18.60
		40	42.40
10250	0	10	7.70
		15	16.80
	0.15	35	42.40

Antech Reporting Lite

- ◆ Lite version is a highly simplified module which caters to the end users who are not concerned with the database management functions
- ◆ This module is capable of generating reports from pre defined Layouts created by power users in the admin and user modules.
- ◆ Users can simply go straight into pivot table usage and convert data generated into presentable information for daily reporting needs.

Typical Usage of Antech Reporting (Multi-user Env.)



Feature Comparison

Feature Comparison	Lite Edition	Admin Edition	User Edition
Generate Reports	✓	✓	✓
Design Reports	✓	✓	
Create Layouts	✓		✓
Export Functionality	✓	✓	✓
Create Users		✓	
Define Query	✓	✓	
Multiusers		✓	✓
Backend (MS SQL)		✓	✓

More about Pivot Tables

Pivot Table concept have been in use for quite some time in spread sheet modules developed in the 90s. For typical data entry and storage, data is usually *flat*. Flat means that it consists of only columns and rows, such as in the below example:

Sum of Value	Column					
Row	Qtr1	Qtr2	Qtr3	Qtr4	Grand Total	
1.0 Revenue	231.75	252	272.25	292.5	1048.5	
2.1 Cost of Sales	119.25	139.5	159.75	180	598.5	
3.1 Expense Type 1	29.25	49.5	69.75	90	238.5	
3.2 Expense Type 2	29.25	49.5	69.75	90	238.5	
3.3 Expense Type 3	11.25	11.25	11.25	11.25	45	
4.0 Total Expense	133.3125	178.875	224.4375	270	806.625	
Grand Total	554.0625	680.625	807.1875	933.75	2975.625	

There is a lot of information stored in such data but very difficult to gather the information you want..A pivot table can help you quickly summarize the flat data, giving it *depth*. In the example let's ask "How many Units did we sell in each Region for every Ship Date?"

Sum of Units	Ship Date					
Region	1/31/2005	2/28/2005	3/31/2005	4/30/2005	5/31/2005	6/30/2005
East	66	80	102	116	127	125
North	96	117	138	151	154	156
South	123	141	157	178	191	202
West	78	97	117	136	150	157
(blank)						
Grand Total	363	435	514	581	622	640

, the row is Region, the column is Ship Date, and the data we would like to see is Units. These fields were dragged onto the pivot table from a list of available fields. Pivot tables also allow several kinds of aggregations including: sum, average, standard deviation, Count, etc.

Minimum Requirements

P4, 512MB, XP Pro, XP Home, 2000, .Net Framework 2.0 and MSSQL (for Multiuser Env.)

Contact Us

Enquiries info@antech-solutions.com

Support support@antech-solutions.com

Website www.antech-solutions.com